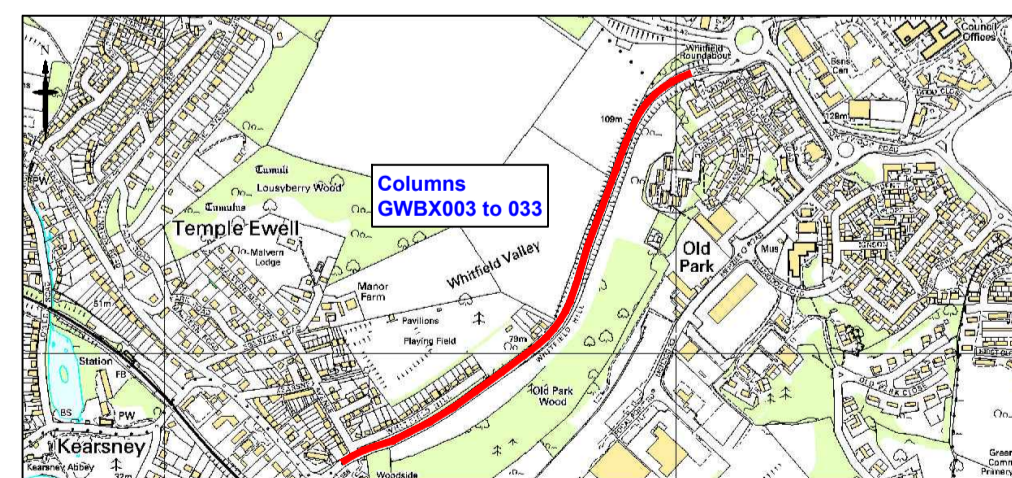
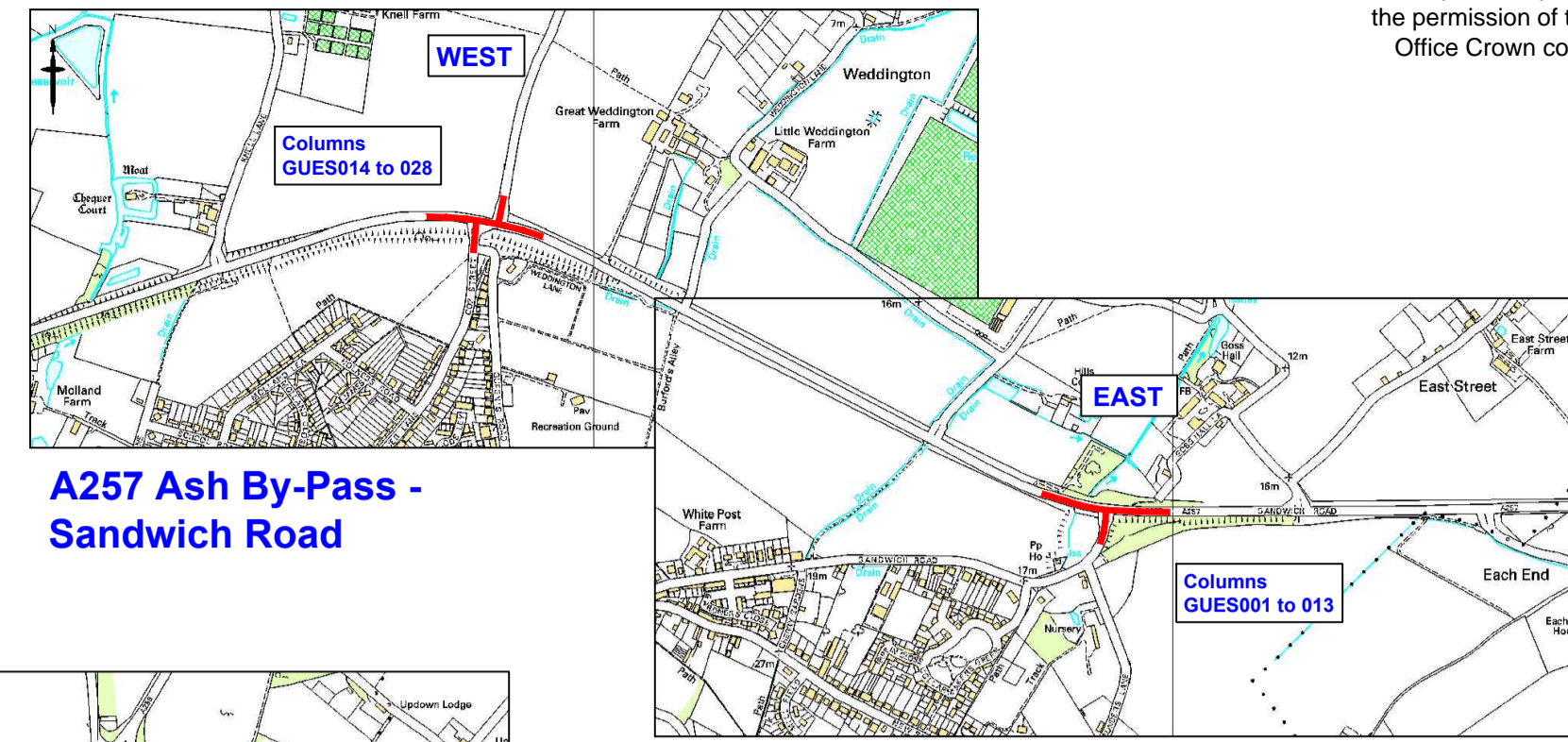


**A256 EAST KENT ACCESS PHASE 1 - Locations A, B, C, D, E  
Ramsgate Road (South)**

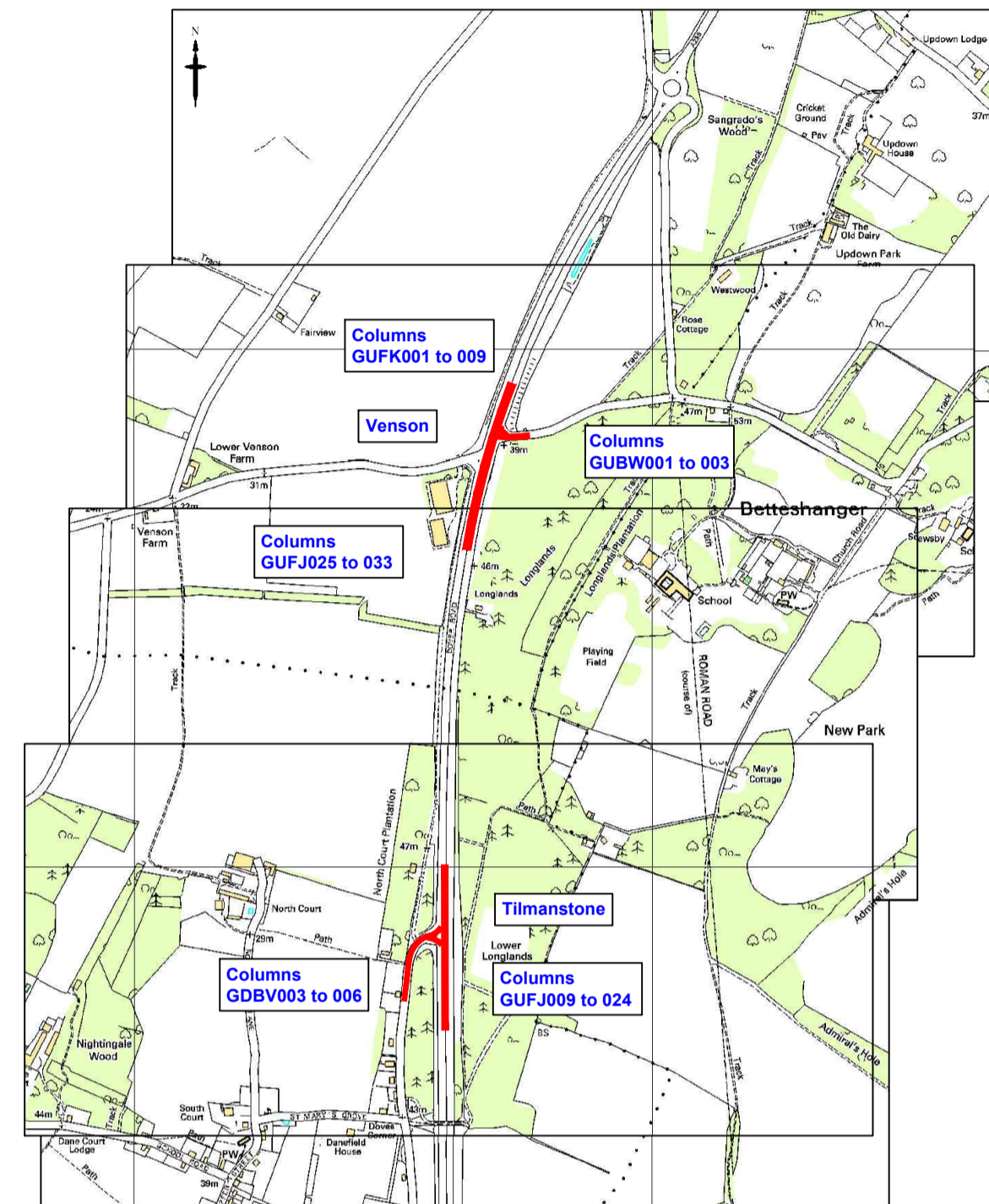


**Whitfield Hill**

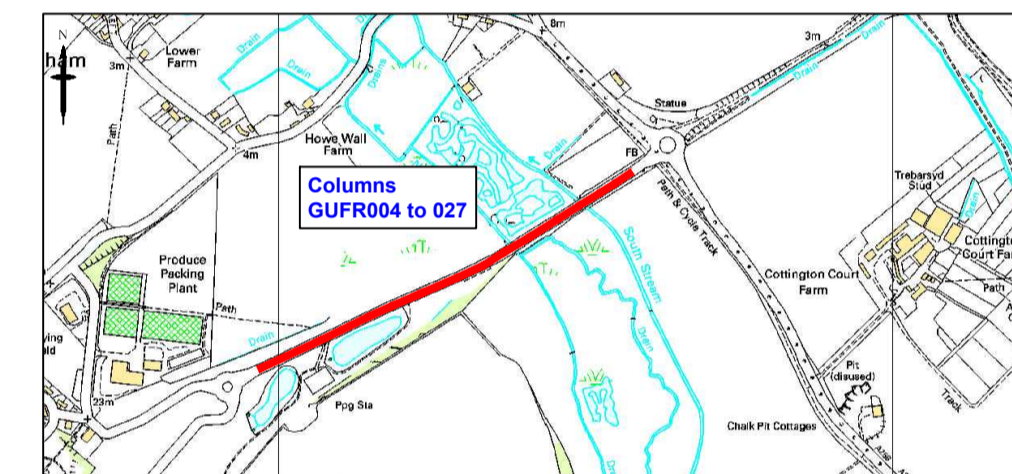
**DOVER**



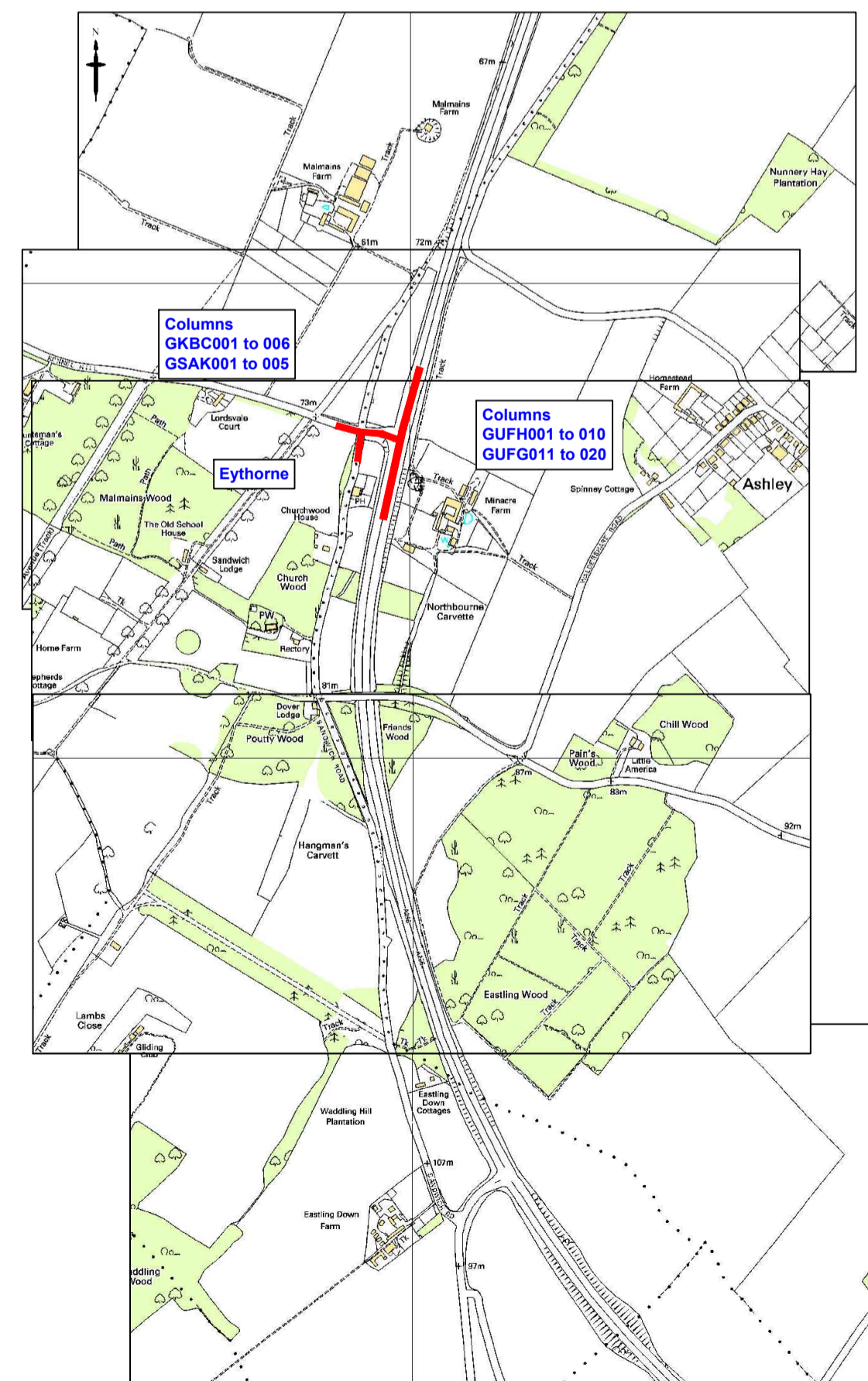
**A257 Ash By-Pass -  
Sandwich Road**



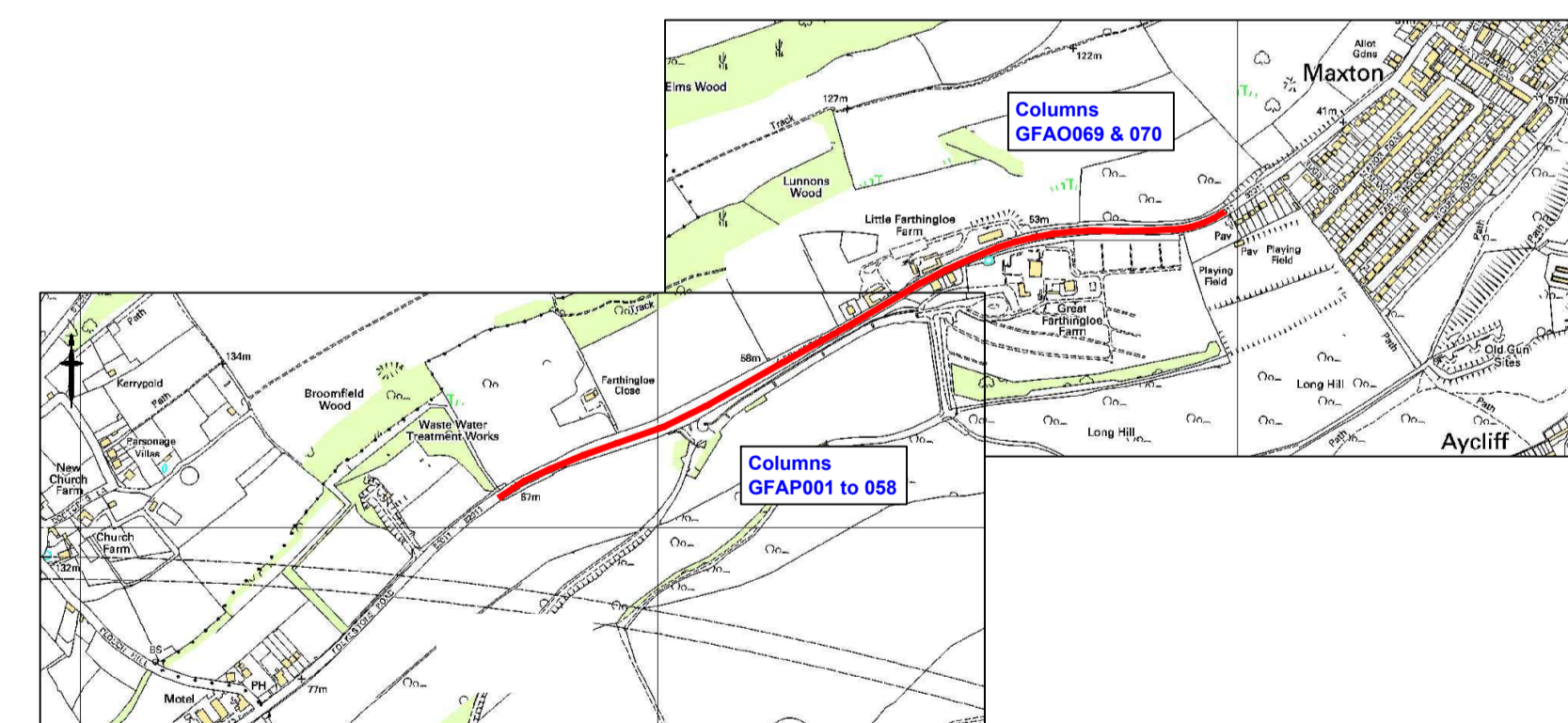
**A256 By-Pass Right Turn Lane - Venson and Tilmanstone**



**Betteshanger Business Park**



**A256 By-Pass - Right Turn Lane - Eythorne**



**Folkestone Road, Farthingloe**

**KEY**

- Extent of Columns to be switched off.
- GUES001 Column Ref No. of columns to be switched off.

2	28/01/2013	Plan Revised for JTB	HC	CH	CH
1	22/01/2013	Notes changed to indicate switch off	HC	CH	CH
0	02/01/2013		HC	CH	CH
Rev	Revision Date	Purpose of revision	Drawn	Checked	Approved



Kent County Council  
Ashford Highway Depot, Javelin Way,  
Ashford, Kent, TN24 8AD  
Tel: 08458 247 800

Project **Safe and Sensible Street Lighting  
Phase 1  
Trial Switch Off of Surplus Lights**

Drawing title

**Location Plan - Dover District**

Drawing status **For Consultation**

Scale **Not to Scale** **Do not scale**

Drawing number **KCC/HL/ESP/Dover/01** Rev **2**

This drawing is not to be used in whole or part other than for the intended purpose and project as defined on this drawing. Refer to the contract for full terms and conditions.